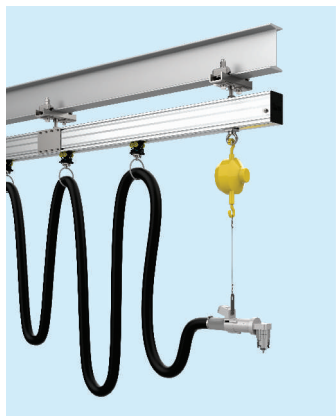
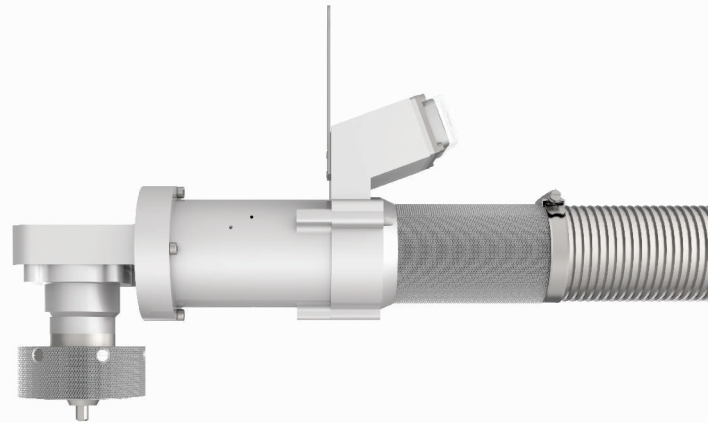
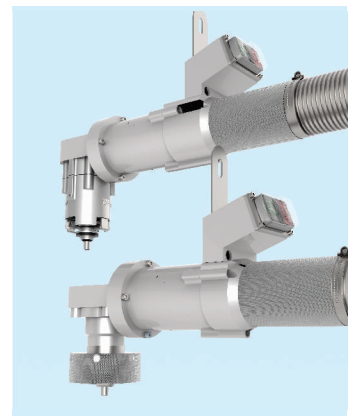
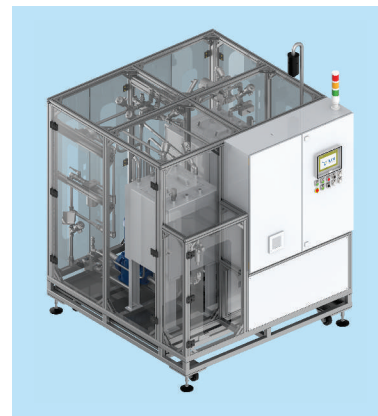


Experts in Filling Systems for Automotives

Semi-Automated Systems for Dispensing fluids in small and precise quantities on the low to high volume assembly line in vehicle manufacturing.



NEW!
Fluid Filling Systems trusted by India's leading Electric Vehicle manufacturers



Proven filling systems for



2 Wheelers



3 Wheelers



4 Wheelers/
SUVs



Agricultural
Vehicles



Off-Highway
Vehicles



Electric
Vehicles

Applications we serve

- > AC Gas Charging
- > Brake Oil
- > Engine and Gearbox
- > Hydraulic Transmission
- > Shock Absorber
- > Wind Shield Washer
- > Diesel UV Dye
- > Hydro-mount
- > Radiator Coolant
- > Power Steering

The Big Difference

Shortest lead time -
On schedule to hit your production start date

Total Control - All In-house capabilities R&D, Manufacturing Services etc.

Proven Track Record -
500+ Machines at World's Top OEMs

Robust Machines -
Operational since 15+ Years

Lowest MTTF/MTBR -
Fastest fulfilment of service requests

Highest Reliability -
Uptime guarantee of 99%

Lowest TCO - Most economical Spares and Service

Seamless Integrations -
MES, QR/RFID, IoT Systems and more

25 Years of Expertise in Fluid Filling Technology



1997

Refurbishing of critical filling machines for top OEM

2000

Entrusted to develop machine considering excellent work

2002

First Fluid Filling Machines for 4 Wheelers in India by Twin

2004

Serving **new applications**; Leading OEMs trust Twin's technology

2012

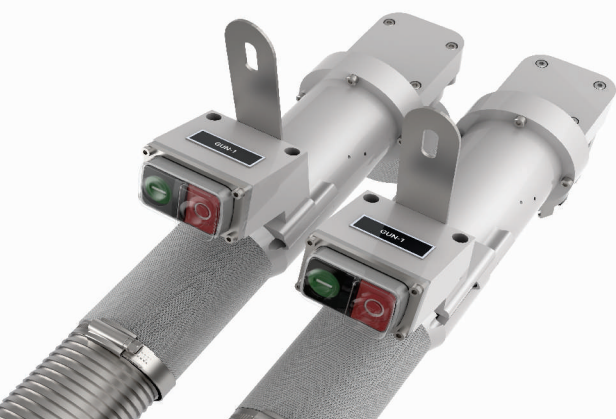
System for **multiple fluids** commissioned successfully

2018

Exports of Fluid Filling Systems begin

2023

India's leading **EV manufacturers** choose Twin's fluid filling systems



Key Clients

DAIMLER



TVS

ROYAL
ENFIELD

TATA MOTORS



TOYOTA

brembo



ATHER



VOLVO



JCB



KTM



Complete range of fluid filling machines



Under vacuum filling

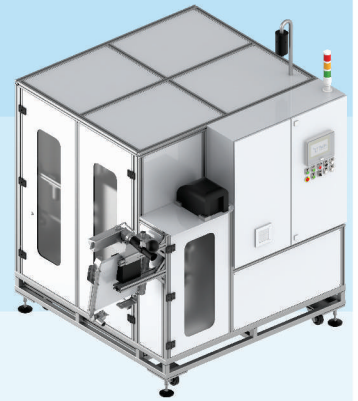
Brake oil filling | Steering oil filling | Coolant filling | AC Gas filling

Metered quantity

Engine oil filling | Diesel filling | Gearbox oil filling | Axle oil filling | Ad-Blue filling
Windshield Washer filling | Transmission oil filling
Hydraulic oil filling | Shock Absorber oil filling | Hydro mount | Coolant

Special Machines

Filling & filtration



Capabilities

All In-house

Dedicated teams for R&D, PLC to Manufacturing and services

Years of Expertise

Experienced team adept at understanding your expectations, and delivering to global standards

Continuous Innovation

MES, IoT and Industry 4.0 integrations, and process optimisation to meet your goals

Total solution with flexibility

Ergonomic solutions, highest safety standards and automation to adapt to your specific needs

Award winning

Fluid filling systems winning accolades from the world's leading brands such as Ford, Toyota and more...

Get India's Top Experts on your team

Recognised as pioneer, innovator and India's foremost expert on filling and dispensing technology



Pradeep Bhalwankar

Managing Director

Force behind Twin's Next Generation machines for smart factories; Taking Twin's technology global.



Sanchita Bhalwankar

Director

“
With Twin we have set a standard, everyone else is judged against.

- Marc Dugas, Manufacturing Engineering, PTO – SaEP Engine Assembly, Ford Motors

“
With Twin we have set a standard, everyone else is judged against.

->>>>

“
With Twin we have set a standard, everyone else is judged against.

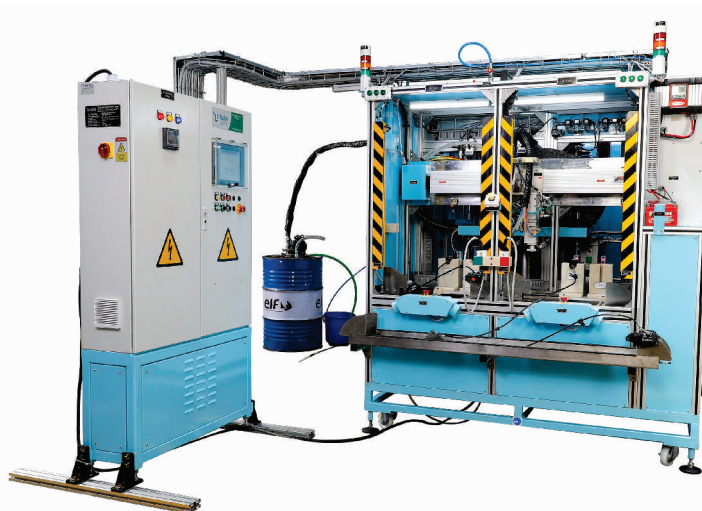
->>>>

Under vacuum filling



Sequence of operation

- 1) Positive air leak test
- 2) Evacuation
- 3) Vacuum hold
- 4) Re vacuum
- 5) Filling
- 6) Filling hold
- 7) Levelling-1
- 8) Levelling-2/Levelling-3



Brake and Clutch Oil Filling

- > 2/3/4 Wheelers
- > Degassing of Oil
- > Synchronous Trolley/Moving Trolley
- > Multiple gun system available
- > ABS Testing along with Brake Oil Filling



Flow Rate
Starting from
40 s



Options
Dot 3, Dot 4,
Servo Transdex II



Oils Handled
Calibration Jig,
Auto transfer of
Oil, moving console



ABS
Suitable to all makes
eg. Continental,
Bosch, Mobis etc.

Radiator Coolant Filling Machine

The coolant filling machine comes in two standard options

- > Pre-mix Coolant dispensing systems
- > Systems with facility to mix Coolant and distilled water in machine



Flow Rate
60 s



Options
Equipment with Variable
filling Ratio for coolant &
distilled water available

Power Steering Oil Filling

- > 4 Wheelers, HCVs
Degassing Of Oil Synchronous Trolley/
Moving Trolley
- > Auto Clamping Adapter/Gun



Flow Rate
80 s



Options
Calibration Jar,
Auto transfer of oil
to machine tank

AC Charging Stations

- > 4 Wheelers, HCVs
- > Manual/Auto dispensing gun adapter
- > Accumulator for maintaining consistent pressure throughout the line



Flow Rate
925 gm/m



Options
Metered quantity filling
(mass flow meter)

SUPPORT SERVICES

- > Application engineering
- > Calibration & commissioning support
- > AMCs, Repairs, spares etc.
- > Operation & Maintenance Trainings
- > Support for system or process upgrade
- > Vacuum pump to seal entire fluid circuit
- > Barcode/RFID based tracking (optional)
- > SCADA/MES integration

Metered Quantity Filling





- › Customised Fluid Circuit to achieve accurate and consistent filling
- › Range of Automatic Filling Guns to suit the unique port size of different vehicles
- › Advanced Flow meters and sensors to precisely measure the quantity of fluid to be filled
- › Manual/Auto Dispensing Gun
- › Advanced Controller with data logging
- › Adapter for air tight sealing




Engine, Axle, Gearbox Oil Filling

- › 2/3/4 Wheelers, LCVs, HCVs, Tractors
- › Integrated with overhead oil storage or oil barrel
- › Transmission filtrations system (Nash 5 level)


 **Flow Rate**
Adjustable


 **Options**
Calibration Jig,
Auto transfer of oil

 **Oils Handled**
5W 30, 10W 30, SAE 90, SAE 14

Urea Filling/Ad-Blue Dispensing Machine


- › Cars, HCVs
- › Automatic filling gun with zero-drip facility
- › Designed to meet Euro IV norms


 **Flow Rate**
15 LPM

 **Options**
Calibration Jar, Auto transfer of Urea to machine tank

Diesel Filling Stations


- › HCVs
- › Flame proof electrical systems
- › Fluid Circuit with Vacuum Pump
- › Air tight sealing with Manual/Auto clamp as per necks of different variants of vehicles

 **Flow Rate**
35 LPM

 **Options**
Calibration Jar,
Auto transfer of Diesel

Windshield Washer Filling machine

- › Cars, HCVs
- › Base stations with overhead consoles
- › Multiple selection options and fill size verification

 **Flow Rate**
7 LPM

Specialized Filling Adapters

to meet your productivity goals



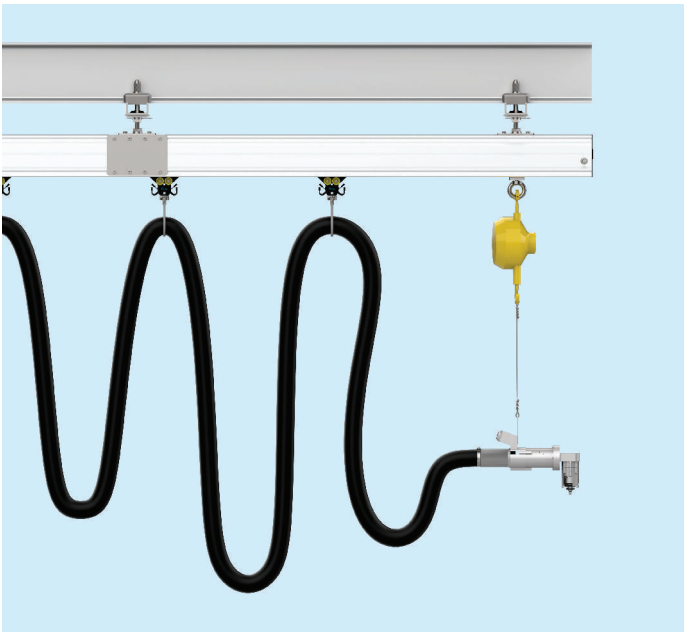
Twin offers specialised filling adapters designed to suit the specific needs of your filling processes and type of fluids. The light-weight filling adapters use pneumatic clamping and valves to offer high flow rate and ensure ease in operation. With fast and easy handling, the Operator stays productive even if the process uses multiple adapters or fluids.



- > Precise measurement at filling point
- > High filling speed, lower evacuation time
- > Light-weight Well-balanced design

- > Coated surface for protection
- > Low maintenance, low-cost

Special Machines



In addition to the compact filling stations, Twin Engineers also offers solutions that combine all filling fluids or gases in a unified system, reducing the number of standalone units and bring in huge savings in space. The filling stations can fulfill mixing, metered filling and vacuum filling processes as a single unit. The filling adapters are designed and color coded to easily match the right fluid filling process.

- Fully customized as per filling processes
- Compact and modular platform
- Multiple fluids and adapters in a single system

It's Not Just Filling We're Experts In...

- Fluid circuit designs
- Control panel design and build
- Evacuation and filling process engineering
- Process and handling Automation
- Safer and ergonomic best practices
- Know-how of fluids, and filling standards

Truly Global

Customer base and service support spanning across the globe.



INDIA (HQ)

Twin Engineers Pvt. Ltd.

J-524, MIDC, Bhosari,

Pune 411 026. Maharashtra, India.

Tel: +91 20 2713 0626, 2713 0118

Enquiry: +91 99755 49701 / 702 / 703

Email: mktg@twinengineers.com

EGYPT, SAUDI ARABIA &

ALL MEMBER STATES OF UAE

Zenithar Foreign trade & consulting

Ozan H. Güreç: +90 505 648 94 25

Email: ozan.gurec@zenithar.net

Hakan Aktay: +90 536 226 00 45

Email: hakan.aktay@zenithar.net

THAILAND

Duraflex D Co Ltd.

Apai Ananthset

Mob: 66616626561

Email: apai@duraflex-d.com

TURKEY

ARES Trafo

Cemil

Mob: +90532 788 6166

Email: cemilberker@aresmetal.com